

## **VITA ENAMIC® – 10 FACTS & FEATURES**

### **VITA ENAMIC is**

- 1.** The first hybrid dental ceramic in the world with a dual network structure
- 2.** The perfect combination of stability and elasticity

### **VITA ENAMIC ensures:**

- 3.** Enormous strength since masticatory forces are absorbed
- 4.** Utmost reliability
- 5.** Precise and accurate restorations
- 6.** Excellent final results with superb esthetics
- 7.** Fast and efficient processing

### **VITA ENAMIC is particularly suitable for:**

- 8.** Posterior crowns
- 9.** Minimally invasive restorations

### **VITA ENAMIC is available:**

- 10.** In 5 shades and 2 translucency levels



### **1. The first hybrid dental ceramic in the world with a dual network structure**

The ceramic-polymer network structure combines the positive properties of both materials in a hybrid material.



### **2. The perfect combination of stability and elasticity**

The dominant basic ceramic network (86 % by weight) ensures stability and the polymer network (14 % by weight) guarantees elasticity.

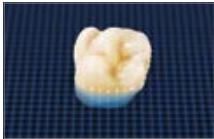


### **3. Enormous strength since masticatory forces are absorbed**

The dual network structure ensures enormous strength. Masticatory forces are absorbed by the polymer network.

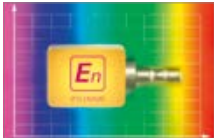
### **4. Utmost reliability and integrated crack-stop function**

In comparison with other dental materials, the highest value of the Weibull modulus could be achieved. Possible crack formation in the ceramic is stopped by the polymer network.



### **5. Precise and accurate restorations**

Exceptional edge stability and reproduction of details ensure accurate results.






### **6. Excellent final results with superb esthetics**

The material exhibits excellent light conductivity, blends perfectly into the residual tooth substance and produces a natural play of colors.



### **7. Fast and efficient processing**

Shorter milling times than those of comparable materials and considerably extended service life of milling tools.

Indication		VITA ENAMIC
Crowns on dies		●
Onlays/Inlays		●
Veneers		●

## 8. Posterior crowns

Crowns in the posterior region benefit from the special absorption properties of the polymer network.

## 9. Minimally invasive restorations

Preservation of tooth substance is possible thanks to the ability to fabricate high-precision restorations with reduced wall thickness.



## 10. In 5 shades and 2 translucency levels

VITA ENAMIC is available in five VITA SYSTEM 3D-MASTER SHADES (0M1 to 3M2) and two translucency levels.

## VITA ENAMIC® for CEREC® / inLab®

VITA SYSTEM 3D-MASTER® range of shades

### VITA ENAMIC® high translucent

Shade	Design.	Geometry	Content	Prod. No.
0M1-HT	EM-14	12 x 14 x 18 mm	5 pieces	EC40M1HTEM14
1M1-HT	EM-14	12 x 14 x 18 mm	5 pieces	EC41M1HTEM14
1M2-HT	EM-14	12 x 14 x 18 mm	5 pieces	EC41M2HTEM14
2M2-HT	EM-14	12 x 14 x 18 mm	5 pieces	EC42M2HTEM14
3M2-HT	EM-14	12 x 14 x 18 mm	5 pieces	EC43M2HTEM14
0M1-HT	EM-10	8 x 10 x 15 mm	5 pieces	EC40M1HTEM10
1M1-HT	EM-10	8 x 10 x 15 mm	5 pieces	EC41M1HTEM10
1M2-HT	EM-10	8 x 10 x 15 mm	5 pieces	EC41M2HTEM10
2M2-HT	EM-10	8 x 10 x 15 mm	5 pieces	EC42M2HTEM10
3M2-HT	EM-10	8 x 10 x 15 mm	5 pieces	EC43M2HTEM10



### System compatibility:

VITA ENAMIC can be processed with Sirona's CEREC or inLab MC XL systems, software version 4.0 or higher.

## VITA ENAMIC® translucent

Shade	Design.	Geometry	Content	Prod. No.
0M1-T	EM-14	12 x 14 x 18 mm	5 pieces	EC40M1TEM14
1M1-T	EM-14	12 x 14 x 18 mm	5 pieces	EC41M1TEM14
1M2-T	EM-14	12 x 14 x 18 mm	5 pieces	EC41M2TEM14
2M2-T	EM-14	12 x 14 x 18 mm	5 pieces	EC42M2TEM14
3M2-T	EM-14	12 x 14 x 18 mm	5 pieces	EC43M2TEM14

VITA Zahnfabrik H. Rauter GmbH & Co.KG  
Postfach 1338 · D-79704 Bad Säckingen · Germany  
Tel. +49(0)7761/562-0 · Fax +49(0)7761/562-299  
Hotline: Tel. +49(0)7761/562-222 · Fax +49(0)7761/562-446  
[www.vita-zahnfabrik.com](http://www.vita-zahnfabrik.com) · [info@vita-zahnfabrik.com](mailto:info@vita-zahnfabrik.com)

The **En** formula for success: strength + elasticity = reliability<sup>2</sup>